

An aerial photograph of the Chicago skyline at dusk. The city is densely packed with skyscrapers, and the Lake Michigan shoreline is visible in the background under a twilight sky with scattered clouds. The text is overlaid on the left and center of the image.

PROJECT BEACON

A GAME-CHANGING MOMENT!

**OUTDOOR SQUASH & ART
UNION PARK, CHICAGO**

PSA FOUNDATION OUTDOOR SQUASH



Rendering of the Planned Court in Union Park Chicago

WHY OUTDOOR SQUASH?

- Squash is one of the healthiest sports, hugely popular, and played around the world.
- Outdoor squash is gaining momentum in the U.S., inspired by international success.
- Project Beacon will make squash accessible to all in Chicago, moving it from private clubs to public spaces.
- Project Beacon aims to advance outdoor squash in the U.S. by making it accessible to all, starting in Chicago.
- Supported by local businesses, the Professional Squash Association (PSA) and its Foundation, US Squash and its Foundation, the Chicago Park District, and a passionate Chicago squash community.
- Beacon will promote health and inclusivity by bringing squash into the community.

We can do this by creating publicly accessible outdoor squash courts

VISION: EQUITY + INCLUSIVITY SPORT + ART + OUTDOORS



**Planned Court with Art renderings on outside walls
as a showpiece and destination in Union Park Chicago**

- Project Beacon leverages the Chicago Park District, and local youth and civic organizations, to promote outdoor access.
- US Squash and the Professional Squash Association are committed to providing long-term programming for outdoor squash.
- This initiative combines a state-of-the-art glass squash court with rotating art displays on its outside walls, promoting recreation and creativity.
- Programming features for the Union Park court:
 - Dedicated website for booking court time, and a calendar of events.
 - Fieldhouse to provide loaner equipment donated by Dunlop.
 - Squash clinics, professional exhibitions, and amateur tournaments at all skill levels.
 - Programs for the summer day camps that fill Union Park and to the middle schools in the neighborhood.
 - Outdoor art will be a unique feature, with art by children and professionals, shown on rotating exhibits on its outside walls.

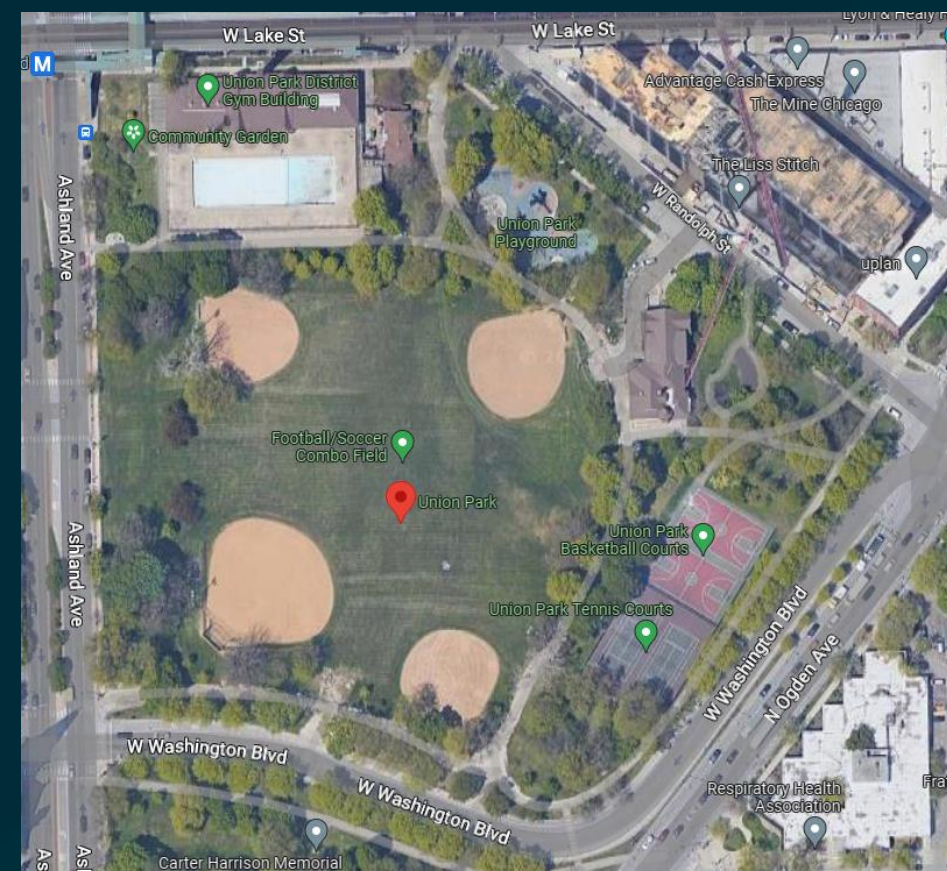
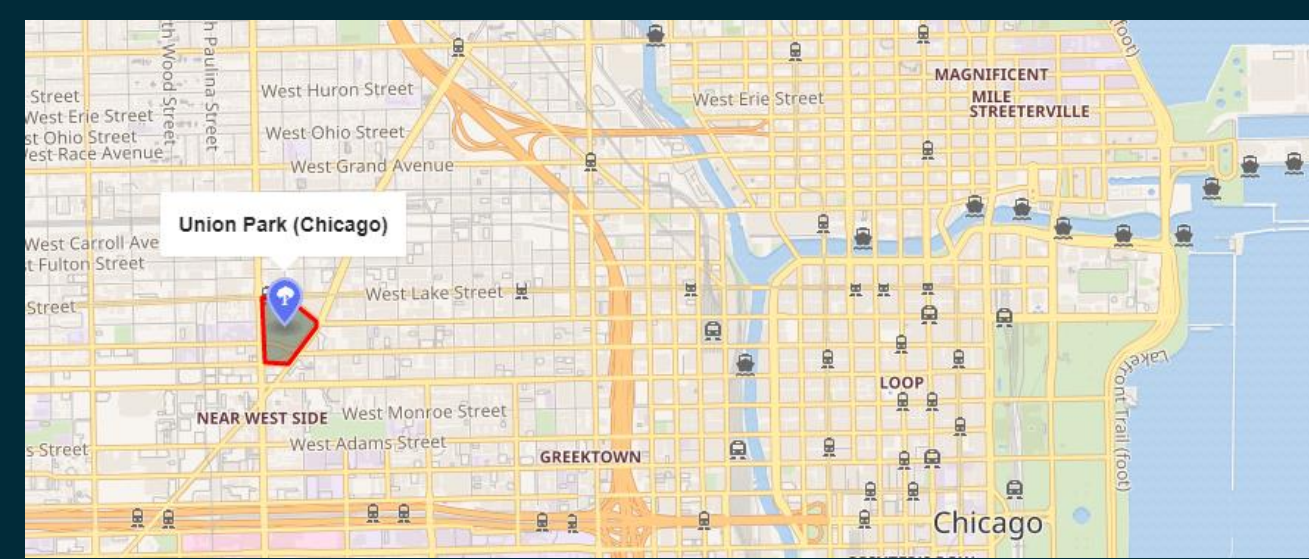
Squash is fun, physically demanding, globally represented

- Voted the healthiest sport based on cardio endurance, muscular strength, flexibility, calories burned, and low risk of injuries (Forbes 2003).
- Global Presence:
 - Olympic debut in LA 2028.
 - Played in 185 countries with 50,000 courts worldwide / 3,700 courts in the U.S.
 - 20 million players globally / 1.6 million players in the U.S.
- Health Benefits:
 - Burns more calories per hour than soccer, biking, or tennis (1,034 calories/hour).
 - In a typical professional match, players strike ball 500 times, cover 2,500 meters, lunge 100 times.
- Growth:
 - Junior Squash in the U.S. grew by 400% (2007-2011) and continues to grow 30% annually.
- Currently, there are no outdoor squash courts in Chicago.



THE FIRST LOCATION FOR BEACON: UNION PARK, CHICAGO

- An excellent location has been identified and contracted with the Chicago Park District for the first court for Project Beacon at Union Park.
- Union Park comprises 13.5 acres, located in the Near West Side of Chicago, adjacent to a Chicago 'L' station.
- The park has large green fields, shade areas, athletics and recreation, playgrounds, a swimming pool, a fieldhouse, tennis courts, baseball fields, basketball courts.
- This first outdoor court in a US park will enhance Chicago's position as a global center for recreation, arts and innovation.



Outdoor Squash Court location





Outdoor Glass Court examples, temporary courts, for events at Millennium Park Chicago (above) and in Egypt (below)



BEACON AND CHICAGO LEAD THE WAY FOR OUTDOOR SQUASH

- There are no public outdoor squash courts in parks anywhere in the US. We will be the first behind a recently announced effort by US Squash to build outdoor courts nationwide.
- Join us in making history by supporting the first public outdoor squash court in the U.S.
- With our commitment and your support, we can build and maintain these courts with robust programming, making squash accessible to everyone.
- Join this groundbreaking initiative. Your contribution will create a vibrant community space where sports, art, and education come together. Together, we can inspire a new generation of athletes and artists.
- This is just the beginning! We plan to add more courts in other public parks. Support Project Beacon today and help us bring outdoor squash to Chicago!
- Now is the time for individual contributions! You can be part of making this happen.

FUNDRAISING INITIAL OUTDOOR COURT IN UNION PARK

Approximately
\$350,000
Total project cost

of which approximately
\$280,000
has been pledged and contributed to-date

Includes support from:



Fundraising Milestones

- | | | |
|---|-----------|-----------|
| 1. Fundraising through early September 2024 | \$280,000 | COMPLETED |
| 2. Final Fundraising Goal by November 2024 | \$70,000 | |

Now is the time for Individual Contributions!

You can be part of this!

FUNDRAISING OPPORTUNITY:

Now is the time to complete fundraising from Individual Contributions!

Sponsorship Opportunities

	Friend	Advocate	Supporter	Activist	Sustainer	Champion
Recognition inclusions	Up to \$500	\$1,000	\$5,000	\$10,000	\$25,000	\$50,000+
Giving website	★	★	★	★	★	★
Grand opening recognition			★	★	★	★
On-site recognition				★	★	★
Naming rights sponsorship						★

Note: all donations are intended to be tax deductible donations made to the PSA Foundation, a 501c(3) organization.



Ways to Donate

Checks can be mailed to:

US Professional Squash Association Foundation

c/o David Williams

Williams, Bax & Saltzman, PC

Suite 3700

Chicago, IL 60601

Funds can be wired to:

Destination Bank: Bank of America

ABA: 026009593

Bank Address: 222 Broadway, New York, NY 10038

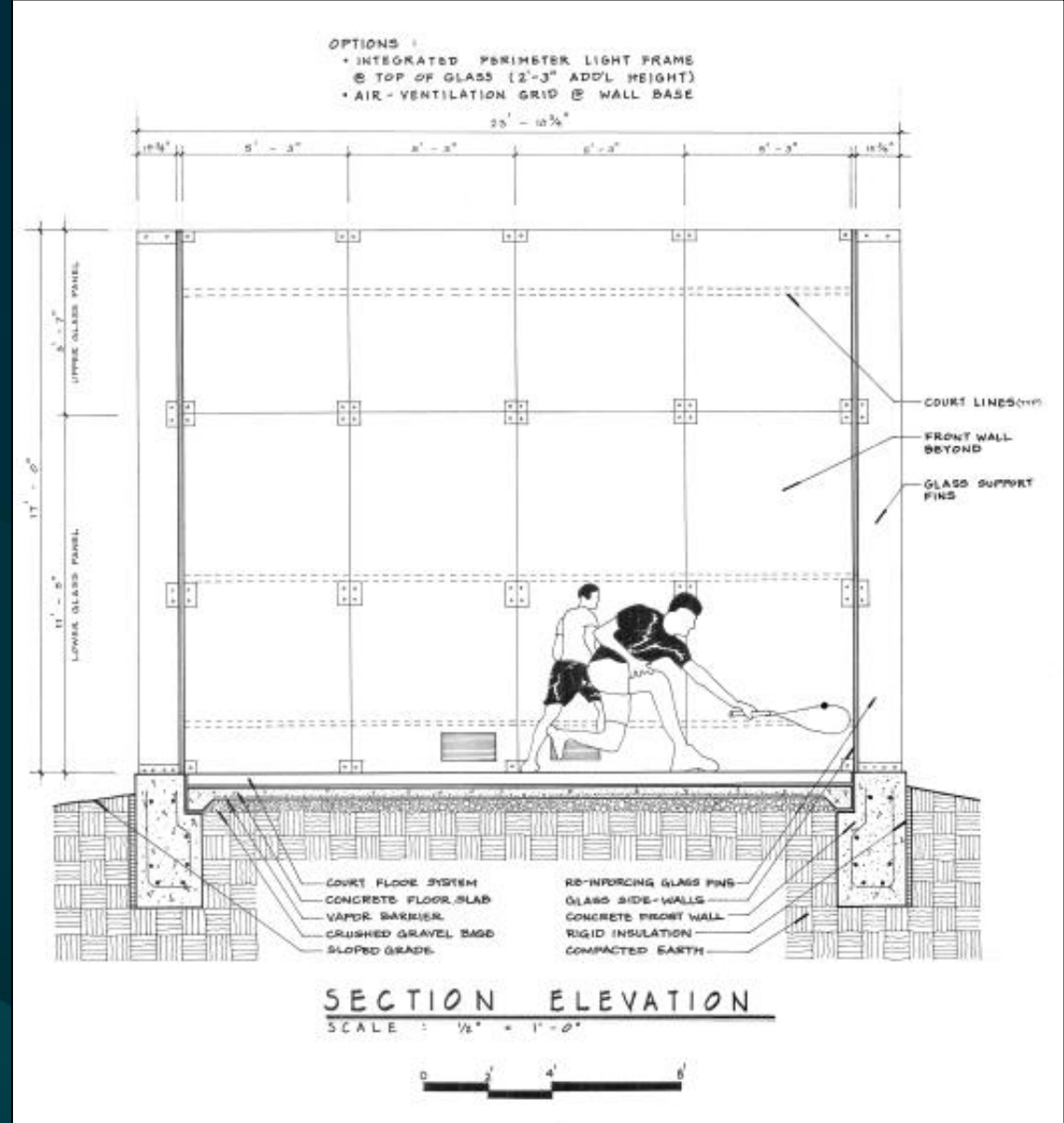
For Final Credit: 291029786583, U.S. Professional Squash Association Foundation

EIN:82-1615366



APPENDIX

COURT RENDERINGS: UNION PARK



Beacon's Partners

COMMUNITY PARTNERS:

Chicago Park District
After School Matters
MetroSquash
Art Leader (Shashi Caudill)
Rebuild Foundation (Theaster Gates)

COURT DEVELOPMENT & CONSTRUCTION:

Bulley & Andrews – pre-construction services
Enspect – Structural Engineering
Outdoor Squash BV – Court Developer
James & Kutyla – Architectural Drawings
Highlander Construction & Design – General Contractor
PSA Squash Tour and US Squash – Website Development

LEGAL ADVISORS:

David Williams of Williams Bax & Saltzman PC
Lenny Asaro of Faegre Drinker

FINANCIAL CONDUIT:

The PSA Foundation US
US Squash Foundation
(501c3 charitable organizations)

OTHER ATHLETIC COLLABORATORS:

The University Club of Chicago membership
Lakeshore Sport & Fitness pro Luis Sanchez
Members of The University Club of Chicago and its squash professionals
Illinois Squash Association
The PSA Squash Tour

An international volunteer group of more 70+ individuals

Current Timeline for Beacon in Union Park Chicago

- 1. Operating Agreement in place with Chicago Park District** Complete
- 2. Purchase Contract with Outdoor Squash BV** Complete
- 3. Pre-shipment inspection of Court** October
- 4. Permitting with Chicago Park District & City of Chicago** November 2024
- 5. Shipment of Court to Chicago** October/November 2024
- 6. Arrival of Court in Chicago** November 2024
- 7. Site Development begins** Early spring 2025, weather permitting
- 8. Court Erection** Early Spring 2025
- 9. Opening events** Spring 2025
- 10. Open to public** Spring 2025

FOR ADDITIONAL INFORMATION

Arnie Dratt

President

PSA Foundation US

adratt@yahoo.com

312-560-6585

www.psafoundation.com



THANK YOU!